

RFM-CP2

Gauging System



Applications

The RFM-CP2 industrial fuel gauging system is designed for use with both stand alone sub base fuel tanks as well as freestanding day tank systems. It is operable with both 12V and 24V generator systems for versatility in installation. The digital readout of fuel capacity is displayed by gallons or percentage with toggle button on front face. The alarm indication is by audible and visual indication of low fuel, high fuel, critical low, critical high and leak alarm conditions. There is a silence feature which can be depressed for all alarm conditions.

Construction

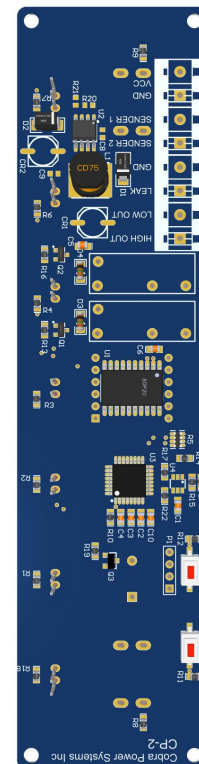
- NEMA 1 and NEMA 4X options
- 12VDC or 24VDC inputs
- Low Fuel alarm led with external relay output
- High Fuel alarm led with external relay output
- Critical Low Fuel alarm audible and visual led
- Critical High Fuel alarm audible and visual led
- Leak alarm audible and visual led
- Output for external audible alarm with silence button
- Weather resistant PVC faceplate
- Terminal blocks for #20-#14 AWG conductors
- LED display in Gallons
- LED display in Percentage
- inputs via resistance sender 240-330hm

Wiring Specifications

Distance	Input	Sender	Outputs
0-25'	18 AWG	18 AWG	18 AWG
25'-50'	16 AWG	16 AWG	16 AWG
50'-100'	14 AWG	16 AWG	14 AWG
100'-150'	14 AWG	14 AWG	14 AWG

I/O Signal

There are two voltage outputs (12V or 24V) which can be used to trigger external relays or contactors. There is also a common alarm output (12V or 24V) which will operate both high a low fuel alarm conditions. The alarm levels for low and high fuel as well as total capacity are programmable up to 9,999 gallons and 0-100% for alarm triggers.



All data and specifications contained herein are subject to change without notification. All values are nominal and may vary. All styles and standards dependent on version, and subject to change.

RFM-CP2 Gauging System

Technical Specifications

Construction

Terminal Block	8 position
Voltage Rating	7-36VDC nominal - 12/24VDC generator systems
Housing	PC Injection molded

Standards and Certifications

Industry Approvals	RoHS Compliant
Resistors, Relays, Capacitors	UL Recognized, RoHS, CE

Electrical Ratings

Relays	Omron 1272C1
Contact Form	SPST
Rated Coil Voltage	5V
Rated Current (mA)	80
Coil resistance (Ω)	63
Operating Voltage	75%
Release Voltage	5%
Power Consumption	400 (mW)
Terminals	PCB
Rated load (resistive)	.5A @ 125VAC 2A @ 30 VDC 2A @ @ 250VAC
Low Fuel Output	.5A @ 30 VDC
High Fuel Output	.5A @ 30 VDC
Common Alarm/Audible Output	.5A @ 30 VDC

Connections (Typ.)

Terminal Block	
TB1-1	VCC (12/24VDC)
TB1-2	GND
TB1-3	Sender 1
TB1-4	Sender 2
TB1-5	Leak GND
TB1-6	Leak Input
TB1-7	Low Out (12/24VDC)
TB1-8	High Out (12/24VDC)

Customizations

General	-Output Relay Board -Weatherproof Enclosure -Red, Green, Yellow, Blue LED and Digital Display
---------	---

